



Aphasia Lab Newsletter

503-725-3275 | aphasialab@pdx.edu

www.pdx.edu/speech-hearing-sciences/aphasialab



Happy Holidays!

The non-profit **Stroke Onward** has a **free online community** for stroke survivors and their families. It is focused on rebuilding identity through:

- Supportive **community**
- Honest **conversations**
- Curated **resources**
- **Live events** and programs

Easy and fast to **join**: <https://strokeonward.org/community/>



New Aphasia Support Group

Welcoming people with aphasia and their caregivers!
Discover new **communication tools**, **connect** with others, and **share experiences**.

Free in-person meetings! Email Kirsten (kirsteneklug@gmail.com) about joining virtually.

Facilitator: Kirsten Klug, brain injury survivor living with aphasia

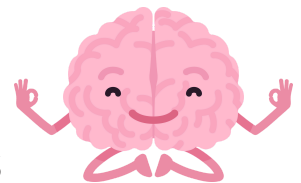
Location: Milwaukie Community Center

5440 SE Kellogg Creek Drive, Milwaukie, OR 97222

Time / Date: 2:30 - 3:30pm every 2nd Wednesday of the month

Featured Non-profits

Love Your Brain



- Online **yoga**, **meditation**, and **mindfulness** classes
- **Educational** speaker series
- In-person **retreats** for brain injury, stroke survivors and caregivers
 - May 4 - 8th, 2026 at Camp Collins, Gresham, OR

<https://www.loveyourbrain.com/retreat>

Must be 18+ years old, 2+ years post injury

National Aphasia Association

- Find **resources**, **groups**, **providers**: <http://aphasia.org/location/>